

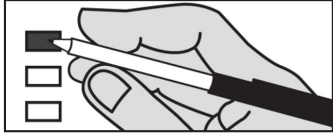
NOTICE OF SPECIAL ELECTION

TUESDAY, February 14, 2012

NOTICE IS HEREBY GIVEN that on Tuesday, February 14, 2012, there will be a Special Election for Chelan County, State of Washington. Only voters within these districts may participate in this election.

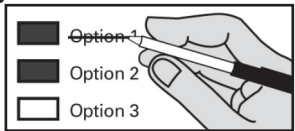
Instructions

How to vote



Use a dark blue or black ink pen to completely fill in the box to the left of your choice. Vote for one in each race. If you vote for more than one, no votes will be counted for that race.

If you make a mistake



Draw a line through the entire measure response or candidate's name. Then you may make another choice.

Entiat School District No. 127

PROPOSITION 1

ENTIAT SCHOOL DISTRICT NO. 127

REPLACEMENT MAINTENANCE AND OPERATION LEVY

The Board of Directors of Entiat School District No. 127 adopted Resolution No. 1-2011/2012, concerning a proposition to finance maintenance and operation expenses. This proposition would authorize the District to meet the educational needs of its students by levying the following excess taxes, in place of an expiring levy, on all taxable property within the District, for support of the District's General Fund maintenance and operation expenses:

Collection Year	Approximate Levy Rate/\$1,000 Assessed Value	Levy Amount
2013	\$2.66	\$595,000
2014	\$2.90	\$650,000

all as provided in Resolution No. 1-2011/2012. Should this proposition be approved?
 LEVY...YES LEVY...NO

Pateros School District No. 122-70J

PROPOSITION 1

PATEROS SCHOOL DISTRICT NO. 122-70J

REPLACEMENT MAINTENANCE AND OPERATION LEVY

The Board of Directors of Pateros School District No. 122-70J adopted Resolution No. 255, concerning a proposition to finance maintenance and operation expenses. This proposition would authorize the District to meet the educational needs of its students by levying the following excess taxes, in place of an expiring levy, on all taxable property within the District, for support of the District's General Fund educational maintenance and operation expenses:

Collection Year	Approximate Levy Rate/\$1,000 Assessed Value	Levy Amount
2013	\$2.77	\$555,000
2014	\$2.94	\$595,000

all as provided in Resolution No. 255. Should this proposition be approved?

LEVY... YES LEVY... NO

Chelan County is a vote-by-mail county. Replacement ballots may be obtained at the only voting center located at the County Auditor's Office, 350 Orondo Ave., Wenatchee. Accessible voting machines are available starting January 27th from 9:00am to 5:00pm and from 8:00am to 8:00pm on Election Day, February 14th. Identification is required.

Official ballot drop-off sites are available January 27th thru 8:00pm on Election Day, February 14th at the following locations:

Wenatchee Public Library Drop box next to book drop 310 Douglas St. Wenatchee, WA 98801	Chelan County Courthouse Licensing Office - Level 2 or Election's Office - Level 3 350 Orondo Ave. Wenatchee, WA 98801	Entiat City Hall Drop box in parking lot 14070 Kinzel St. Entiat, WA 98822
--	--	---

Skip Moore
Chelan County Auditor

For More Information:
Call 509-667-6808

Visit Our Website:
www.elections.ChelanCountywa.gov

Notice of Voter Registration Deadlines

NOTICE IS HEREBY GIVEN THAT, in order to vote in the February 14, 2012 Special Election, a person who is already registered to vote in Washington may update their registration no later than January 16, 2012. A registered voter who fails to transfer their residential address by this deadline may vote according to their previous registration address. If a person is not registered to vote in Washington they must submit a registration application no later than January 16, 2012 or register in person at the Chelan County Auditor's Office no later than February 6, 2011. (RCW 29A.08.140)