

Sample Ballot
Chelan County, Washington
Primary Special Election
August 06, 2013

Precinct
100

Instructions

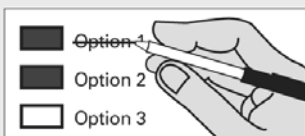
How to vote



Use a dark blue or black ink pen to completely fill in the box to the left of your choice.

Vote for one in each race. If you vote for more than one, no votes will be counted for that race.

If you make a mistake



Draw a line through the entire measure response or candidate's name.

Then you may make another choice.

Optional write-in



To vote for a candidate not listed for that race, fill in the box to the left of the dashed line and print the name of the candidate.

READ: Each candidate for partisan office may state a political party that he or she prefers. A candidate's preference does not imply that the candidate is nominated or endorsed by the party, or that the party approves of or associates with that candidate.

County: Partisan Office

CHELAN COUNTY PROSECUTING ATTORNEY

1 Year Unexpired Term - Vote For One

Douglas J. Shae

Prefers Republican Party

Local Issues

CHELAN COUNTY FIRE PROTECTION DISTRICT NO. 5

PROPOSITION NO. 1

CHELAN COUNTY FIRE PROTECTION DISTRICT NO. 5
GENERAL OBLIGATION BONDS - \$4,135,000

The Board of Fire Commissioners of Chelan County Fire Protection District No. 5 adopted Resolution No. 2013-03 concerning this proposition for bonds. This proposition would authorize the District to acquire additional critical fire, rescue and emergency medical equipment, and fire-rescue facilities for the Volunteer Fire Department to meet the Level of Service recommendations by the Citizens Task Force, to issue up to \$4,135,000 of general obligation bonds maturing within a maximum of twenty years, and to collect excess property taxes annually to repay the bonds, as provided in Resolution No. 2013-03. Should this proposition be:

APPROVED

REJECTED



Who donates to campaigns?

View contributors for candidates and measures

Public Disclosure Commission

www.pdc.wa.gov
Toll Free (877) 601-2828

Continue voting next side



Sample Ballot 12000010100011
00000001102

Sample Ballot

0513031158

Sample Ballot
Chelan County, Washington
Primary Special Election
August 06, 2013

**CHELAN COUNTY FIRE PROTECTION
DISTRICT NO. 5**

PROPOSITION NO. 2
CHELAN COUNTY FIRE PROTECTION DISTRICT NO. 5
Serving the Community of MANSON
FIRE, RESCUE AND EMERGENCY MEDICAL
10-YEAR MAINTENANCE AND OPERATING LID-LIFT

The Board of Fire Commissioners of Chelan County Fire Protection District No. 5 adopted Resolution No. 2013-04 concerning the tax levy for operations to meet the Level of Service recommendations by the Citizens Task Force. This proposition authorizes the District to levy regular property taxes in excess of the limitation imposed by RCW 84.55 at the rate of \$1.02 per thousand of assessed value for a period of ten years, commencing in 2013 (2014 collection) as authorized by RCW 52.16.130 and .140, on all taxable property within the District, to be used for fire equipment, training and administering the Volunteer Fire Department, all as provided in Resolution No. 2013-04. Should this proposition be:

- APPROVED _____
- REJECTED _____

Sample Ballot12000010200018

Sample Ballot

000000001205

0513031158