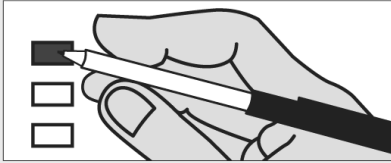


## Instructions

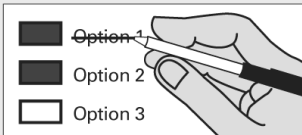
### How to vote



Use a dark blue or black ink pen to completely fill in the box to the left of your choice.

Vote for one in each race. If you vote for more than one, no votes will be counted for that race.

### If you make a mistake



Draw a line through the entire measure response or candidate's name.

Then you may make another choice.



### Who donates to campaigns?

View contributors for candidates and measures

#### Public Disclosure Commission

[www.pdc.wa.gov](http://www.pdc.wa.gov)  
Toll Free (877) 601-2828

## Local Issues

### School Districts

#### CASCADE SCHOOL DISTRICT NO. 228

##### PROPOSITION 1

CASCADE SCHOOL DISTRICT NO. 228

BONDS TO CONSTRUCT, RENOVATE AND MODERNIZE SCHOOLS

The Board of Directors of Cascade School District No. 228 adopted Resolution No. 14/15-3 concerning a proposition to improve student safety, educational opportunities and infrastructure. This proposition would authorize the District to: construct a new Osborn Elementary School on the Pine Street Property, renovate and expand Cascade High School, modernize and expand Peshastin-Dryden Elementary School and refinance the bond issued to acquire the Pine Street Property; issue no more than \$69,500,000 of general obligation bonds maturing within 20 years; and levy annual excess property taxes to repay the bonds, all as provided in Resolution No. 14/15-3.

Should this proposition be:

Approved

Rejected

#### MANSON SCHOOL DISTRICT NO. 19

##### PROPOSITION 1

MANSON SCHOOL DISTRICT NO. 19

REPLACEMENT MAINTENANCE AND OPERATION LEVY

The Board of Directors of Manson School District No. 19 adopted Resolution No. 12-18-14A, concerning a proposition to finance maintenance and operation expenses. This proposition would replace an expiring levy and place an excess tax on all taxable property within the District to support of the District's General Fund:

Collection Year	Approximate Levy Rate/\$1,000 Assessed Value	Levy Amount
2016	\$1.8432	\$1,210,063
2017	\$1.8432	\$1,246,364

Should this proposition be approved?

LEVY . . . YES

LEVY . . . NO

Sample Ballot 12000010100011

000000001102

Sample Ballot

0693031245



**Sample Ballot**12000010200018

000000001393



This page intentionally left blank



0693031245

**Sample Ballot**