

Ferry County, Washington  
Sample Ballot  
Special Election  
February 13, 2018

Precinct *Sample*

**Instructions**

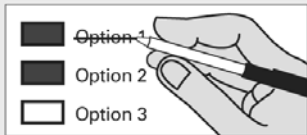
**How to vote**



Use a dark blue or black ink pen to completely fill in the box to the left of your choice.

Vote for one in each race. If you vote for more than one, no votes will be counted for that race.

**If you make a mistake**



Draw a line through the entire measure response or candidate's name.

Then you may make another choice.



**Start voting here**

**Curlew School District No. 50**

**Replacement Educational Programs and Operation Levy Proposition 1**

The Board of Directors of Curlew School District No. 50 adopted Resolution No. 2017-12-02, concerning a proposition to finance educational programs and operation expenses. This proposition would authorize the District to meet educational needs of its students by levying the following excess taxes, to replace an expiring levy, on all taxable property within the District, for educational programs and operation expenses not funded by the State, including music, art, athletics and early childhood:

Collection Year	Approximate Levy Rate / \$1,000 Assessed Value	Levy Amount
2019	\$1.50	\$185,000
2020	\$1.50	\$190,000
2021	\$1.50	\$195,000
2022	\$1.50	\$200,000

all as provided in Resolution No. 2017-12-02.  
Should this proposition be approved?

Levy Yes

Levy No



**Who donates to campaigns?**

View contributors for candidates and measures

**Public Disclosure Commission**

www.pdc.wa.gov  
Toll Free (877) 601-2828

Sample Ballot 12000010100011  
000000001102

Sample Ballot

1273031202

Ferry County, Washington

Sample Ballot

Special Election

February 13, 2018

Precinct *Sample*

**Republic School District No.309  
Replacement Educational Programs and Operation Levy  
Proposition 1**

The Board of Directors of Republic School District No. 309 adopted Resolution No. 12-2017-2, concerning a proposition to finance educational programs and operation expenses. This proposition would authorize the District to meet educational needs of its students by levying the following excess taxes, to replace an expiring levy, on all taxable property within the District, for educational programs and operation expenses not funded by the State, including music, art, athletics and early childhood:

Collection Year	Approximate Levy Rate / \$1,000 Assessed Value	Levy Amount
2019	\$1.50	\$450,000
2020	\$1.50	\$460,000
2021	\$1.50	\$475,000
2022	\$1.50	\$490,000

all as provided in Resolution No. 12-2017-2.  
Should this proposition be approved?

Levy Yes

Levy No

Sample Ballot 12000010200018

000000001205

Sample Ballot

1273031202