

### Instructions

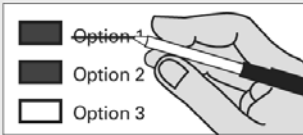
#### How to vote



Use a dark blue or black ink pen to completely fill in the box to the left of your choice.

Vote for one in each race. If you vote for more than one, no votes will be counted for that race.

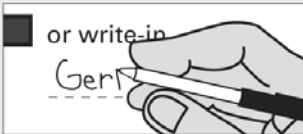
#### If you make a mistake



Draw a line through the entire measure response or candidate's name.

Then you may make another choice.

#### Optional write-in



To vote for a candidate not listed for that race, fill in the box to the left of "or write-in" and print the name on the dashed line.

**READ:** Each candidate for partisan office may state a political party that he or she prefers. A candidate's preference does not imply that the candidate is nominated or endorsed by the party, or that the party approves of or associates with that candidate.

 **Start voting here**

**State:** Partisan Offices

Legislative District 7  
State Senator  
(1-year unexpired term)

- Karen Hardy  
(Prefers Democratic Party)
- Shelly Short  
(Prefers Republican Party)
- Write-in

Legislative District 7  
State Representative Pos. 1  
(1-year unexpired term)

- Susan Swanson  
(Prefers Democratic Party)
- Jacquelin Maycumber  
(Prefers Republican Party)
- Write-in

**Vote for only one candidate in each contest.**



#### Who donates to campaigns?

View contributors for candidates and measures

Public Disclosure Commission

www.pdc.wa.gov  
Toll Free (877) 601-2828

Sample Ballot 12000010100011

000000001102

Sample Ballot

1163031262



**Sample Ballot**12000010200018

000000001393



This page intentionally left blank



1163031262

**Sample Ballot**