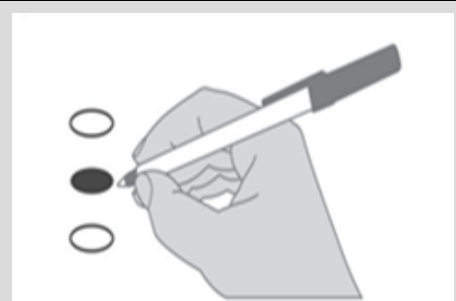


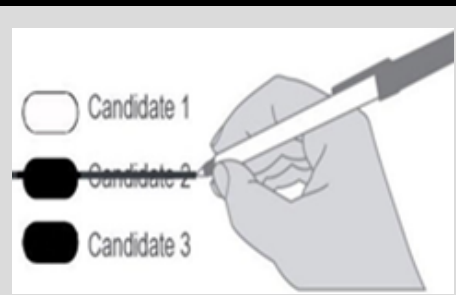
Sample Ballot
General Election
Grays Harbor County, Washington
November 6, 2018

Instructions



Use a pen to completely fill in the oval to the left of your choice.

Vote for one in each race.
 If you vote for more than one, no votes will be counted for that race.



Draw line through the entire measure response or candidate's name. Then you may make another choice.

To vote for a candidate not listed for that race fill in the oval to the left of the line and print the name of the candidate.

Who donates to campaigns?
 View contributors for candidates and measures
Public Disclosure Commission
www.pdc.wa.gov
 Toll Free (877) 601-2828

Initiatives to the People

Initiative Measure No. 1631

Initiative Measure No. 1631 concerns pollution.

This measure would charge pollution fees on sources of greenhouse gas pollutants and use the revenue to reduce pollution, promote clean energy, and address climate impacts, under oversight of a public board.

Should this measure be enacted into law?

- Yes
 No

Initiative Measure No. 1634

Initiative Measure No. 1634 concerns taxation of certain items intended for human consumption.

This measure would prohibit new or increased local taxes, fees, or assessments on raw or processed foods or beverages (with exceptions), or ingredients thereof, unless effective by January 15, 2018, or generally applicable.

Should this measure be enacted into law?

- Yes
 No

Initiative Measure No. 1639

Initiative Measure No. 1639 concerns firearms.

This measure would require increased background checks, training, age limitations, and waiting periods for sales or delivery of semiautomatic assault rifles; criminalize noncompliant storage upon unauthorized use; allow fees; and enact other provisions.

Should this measure be enacted into law?

- Yes
 No

Initiative to the Legislature

Initiative to the Legislature 940

Initiative Measure No. 940 concerns law enforcement.

This measure would require law enforcement to receive violence de-escalation, mental-health, and first-aid training, and provide first-aid; and change standards for use of deadly force, adding a "good faith" standard and independent investigation.

Should this measure be enacted into law?

- Yes
 No

Advisory Vote

Advisory Vote No. 19

Engrossed Second Substitute Senate Bill 6269

The legislature expanded, without a vote of the people, the oil spill response and administration taxes to crude oil or petroleum products received by pipeline, costing \$13,000,000 over ten years for government spending.

This tax increase should be:

- Repealed
 Maintained

If a primary election was held for an office, the two candidates who received the most votes in the Primary advanced to the General Election.

READ: Each candidate for partisan office may state a political party that he or she prefers. A candidate's preference does not imply that the candidate is nominated or endorsed by the party, or that the party approves of or associates with that candidate.

Federal - Partisan Offices

United States U.S. Senator

6-year term - vote for one

- Maria Cantwell
(Prefers Democratic Party)
 Susan Hutchison
(Prefers Republican Party)

Congressional District 6 U.S. Representative

2-year term - vote for one

- Derek Kilmer
(Prefers Democratic Party)
 Douglas Dightman
(Prefers Republican Party)

State Partisan Offices

Legislative District 19 State Representative Pos. 1

2-year term - vote for one

- Jim Walsh
(Prefers Republican Party)
 Erin Frasier
(Prefers Democratic Party)

Legislative District 19 State Representative Pos. 2

2-year term - vote for one

- Brian E. Blake
(Prefers Democratic Party)
 Joel McEntire
(Prefers Republican Party)

Legislative District 24 State Representative Pos. 1

2-year term - vote for one

- Mike Chapman
(Prefers Democratic Party)
 Jodi Wilke
(Prefers Republican Party)

Legislative District 24 State Representative Pos. 2

2-year term - vote for one

- Steve Tharinger
(Prefers Democratic Party)
 Jim McEntire
(Prefers Republican Party)

Vote Both Sides

County Partisan Offices

**Grays Harbor County
County Commissioner #3**

4-year term - vote for one
 Vickie L. Raines
(States No Party Preference)

**Grays Harbor County
Assessor**

4-year term - vote for one
 Dan Lindgren
(Prefers Democrat Party)

**Grays Harbor County
Auditor**

4-year short and full term - vote for one
 Joe MacLean
(Prefers Republican Party)
 Chris Thomas
(Prefers Democrat Party)

**Grays Harbor County
Clerk**

4-year term - vote for one
 Kym Foster
(Prefers Democratic Party)
 Janice Louthan
(Prefers Non Partisan Party)

**Grays Harbor County
Coroner**

4-year term - vote for one
 Robert G. Kegel
(Prefers Democratic Party)

**Grays Harbor County
Prosecutor**

4-year term - vote for one
 Katie Svoboda
(Prefers Democratic Party)

**Grays Harbor County
Sheriff**

4-year term - vote for one
 Richard Scott
(States No Party Preference)

**Grays Harbor County
Treasurer**

4-year term - vote for one
 Kenneth Albert
(Prefers Democrat Party)

Judicial Non-Partisan Offices

**Supreme Court
Justice Position 2**

6-year term - vote for one
 Susan Owens

**Supreme Court
Justice Position 8**

6-year term - vote for one
 Nathan Choi
 Steve Gonzalez

**Supreme Court
Justice Position 9**

6-year term - vote for one
 Sheryl Gordon McCloud

**Court of Appeals, Division 2,
District 2**

Judge Position 2
6-year term - vote for one
 Rebecca Glasgow

**Grays Harbor Superior Court
Judge Position 3**

2-year unexpired term - vote for one
 Ray Kahler
 David Mistachkin

**Grays Harbor County
District Court #1**

4-year term - vote for one
 Kyle L. Imler

**Grays Harbor County
District Court #2**

4-year term - vote for one
 Tom Copland

**Public Utility District --
Nonpartisan Office**

**Public Utility District
Commissioner District No. 1**

6-year term - vote for one
 Allen Werth
 Arie Callaghan

School District Bond

Proposition No. 1

Hoquiam School District No. 28

**Bonds to Renovate, Modernize and
Improve School Facilities**

The Board of Directors of Hoquiam School District No. 28 adopted Resolution No. 17-19, concerning a proposition to enhance the learning environment and improve safety. This proposition would authorize the District to: renovate and modernize Lincoln Elementary School (including upgrading safety, security, roofing, HVAC, plumbing, mechanical and electrical systems; abating asbestos; making health, ADA and energy efficiency improvements; and making site improvements); replace the Mansard type roofs at Hoquiam High School; issue no more than \$6,800,000 of general obligation bonds maturing within 6 years; and levy annual excess property taxes to repay the bonds, all as provided in Resolution No. 17-19.

Should this proposition be:

- Approved
- Rejected

Fire Measure

Proposition No. 1

**Grays Harbor County Fire Protection
District No. 15**

**Permanent Levy for Emergency
Medical Care and Ambulance Service**

Grays Harbor County Fire Protection District No. 15 passed Resolution No. 2018-04 concerning a permanent regular property tax levy in the amount of \$0.50 per \$1,000 assessed valuation, beginning January 1, 2019, for the purpose of providing emergency medical care and ambulance service, pursuant to RCW 84.52.069. Shall Grays Harbor County Fire Protection District No. 15 be authorized to impose a permanent regular property tax levy upon the regular taxable property within the district, of \$0.50 per thousand dollars of assessed valuation?

- Yes
- No

Proposition No. 1

**Grays Harbor County Fire Protection
District No. 16**

**Excess Levy for Emergency Medical
Care and Ambulance Service**

Shall Grays Harbor County Fire Protection District No. 16 be authorized to levy upon the regular taxable property within the district, in addition to the regular levy, the sum of \$75,000.00, or approximately \$1.73 per thousand dollars of assessed value, for collection in 2019 for the provision of emergency medical care and ambulance services all as provided in Resolution Nos. 018-003 and 018-004, adopted by the Board of Commissioners of said district, and the Laws of the State of Washington?

- Yes
- No

End of Ballot - Thank You For Voting!