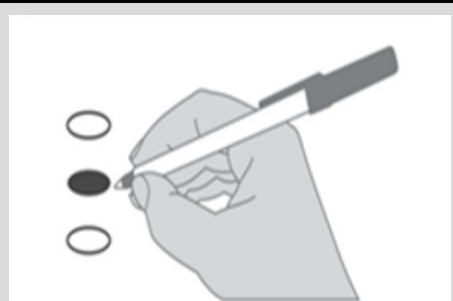


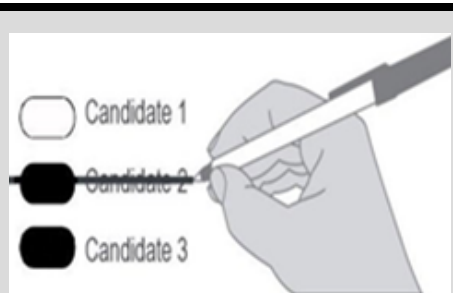
Sample Ballot
 Primary
 Grays Harbor County, Washington
 August 7, 2018

Instructions



Use a pen to completely fill in the oval to the left of your choice.

Vote for one in each race.
 If you vote for more than one, no votes will be counted for that race.



Draw line through the entire measure response or candidate's name. Then you may make another choice.

To vote for a candidate not listed for that race fill in the oval to the left of the line and print the name of the candidate.

Who donates to campaigns?
 View contributors for candidates and measures

Public Disclosure Commission
www.pdc.wa.gov
 Toll Free (877) 601-2828

READ: Each candidate for partisan office may state a political party that he or she prefers. A candidate's preference does not imply that the candidate is nominated or endorsed by the party, or that the party approves of or associates with that candidate.

Federal - Partisan Office

United States U.S. Senator

6-year term - vote for one

- Thor Amundson (Prefers Independent Party)
- Dave Strider (Prefers Independent Party)
- Joey Gibson (Prefers Republican Party)
- Mike Luke (Prefers Libertarian Party)
- GoodSpaceGuy (Prefers Republican Party)
- Clint R. Tannehill (Prefers Democratic Party)
- Maria Cantwell (Prefers Democratic Party)
- Susan Hutchison (Prefers Republican Party)
- Brad Chase (Prefers FDFR Party)
- Tim Owen (Prefers Republican Party)
- Matthew D. Heines (Prefers Republican Party)
- Sam Wright (Prefers The Human Rights Party)
- Art Coday (Prefers Republican Party)
- John Orlinski (Prefers Republican Party)
- Charlie R Jackson (Prefers Independent Party)
- Keith Swank (Prefers Republican Party)
- Alex Tsimerman (Prefers StandupAmerica Party)
- RC Smith (Prefers Republican Party)
- Don L. Rivers (Prefers Democratic Party)
- Jennifer Gigi Ferguson (Prefers Independent Party)
- Steve Hoffman (Prefers Freedom Socialist Party)
- George H. Kalberer (Prefers Democratic Party)
- James Robert "Jimmie" Deal (Prefers Green Party)
- Roque "Rocky" De La Fuente (Prefers Republican Party)
- Jon Butler (Prefers Independent Party)
- Dave Bryant (Prefers Republican Party)
- Mohammad Said (Prefers Democratic Party)
- Matt Hawkins (Prefers Republican Party)
- Glen R Stockwell (Prefers Republican Party)
-

Congressional District 6 U.S. Representative

2-year term - vote for one

- Tyler Myles Vega (Prefers Progressive Party)
- Douglas Dightman (Prefers Republican Party)
- Derek Kilmer (Prefers Democratic Party)
-

State Partisan Offices

Legislative District 19 State Representative Pos. 1

2-year term - vote for one

- Jim Walsh (Prefers Republican Party)
- Erin Frasier (Prefers Democratic Party)
-

Legislative District 19 State Representative Pos. 2

2-year term - vote for one

- David Parsons (Prefers Republican Party)
- Joel McEntire (Prefers Republican Party)
- Brian E. Blake (Prefers Democratic Party)
-

Legislative District 24 State Representative Pos. 1

2-year term - vote for one

- Jodi Wilke (Prefers Republican Party)
- Mike Chapman (Prefers Democratic Party)
-

Legislative District 24 State Representative Pos. 2

2-year term - vote for one

- Jim McEntire (Prefers Republican Party)
- Steve Tharinger (Prefers Democratic Party)
-

County Partisan Offices

Grays Harbor County Commissioner District 3

4-year term - vote for one

- Vickie L. Raines (States No Party Preference)
-

Vote Both Sides

County Partisan Offices

Grays Harbor County - Assessor

4-year term - vote for one

- Dan Lindgren
(Prefers Democrat Party)
-

Grays Harbor County - Auditor

4-year short and full term - vote for one

- Joe MacLean
(Prefers Republican Party)
- Jasmine Dickhoff
(Prefers Democratic Party)
- Chris Thomas
(Prefers Democrat Party)
-

Grays Harbor County - Clerk

4-year term - vote for one

- Janice Louthan
(Prefers Non Partisan Party)
- Kym "Kimberly" R Foster
(Prefers Democratic Party)
-

Grays Harbor County - Coroner

4-year term - vote for one

- Robert G. Kegel
(Prefers Democratic Party)
-

Grays Harbor County - Prosecutor

4-year term - vote for one

- Katie Svoboda
(Prefers Democratic Party)
-

Grays Harbor County - Sheriff

4-year term - vote for one

- Richard Scott
(States No Party Preference)
-

Grays Harbor County - Treasurer

4-year term - vote for one

- Kenneth Albert
(Prefers Democrat Party)
-

Local Measure

**City of Elma
Proposition No. 1
Levy to Partially Fund Police
Services for 2019**

The City of Elma adopted Resolution No. 647 concerning property taxes for Police Department operations. Shall the City of Elma be authorized to collect in 2019 only a total of \$175,000.00 in excess of property taxes at \$0.72 per \$1,000 of assessed valuation or such rate as may be established by the County Assessor as necessary to generate this amount for the sole purpose of adequately funding the operations and maintenance of its Police Department?

- Yes
- No

**Ocean Shores Transportation Benefit
District No. 1
Proposition No.1**

**SALES AND USE TAX FOR
TRANSPORTATION IMPROVEMENTS**

The Board of Ocean Shores Transportation Benefit District No. 1 adopted Resolution No. 1 concerning a sales and use tax to fund transportation improvements. This proposition would authorize a sales and use tax of two-tenths of one percent (0.2%) to be collected from all taxable retail sales and uses within the District in accordance with RCW 82.14.0455 for a term of ten (10) years to pay costs of transportation improvements identified in the City's Transportation Improvement Plan including without limitation pavement preservation.

Shall this proposition be approved?

- Yes
- No

**Proposition No. 1
Grays Harbor County Fire Protection
District No. 2 - Board of
Commissioners -
Proposition reauthorizing regular
emergency medical services property
tax levy**

The Board of Fire Commissioners of Grays Harbor County Fire Protection District No. 2 adopted Resolution 2018-01 concerning a proposition to continue its expiring emergency medical services property tax levy.

Will Grays Harbor County Fire Protection District No. 2 be authorized to continue to fund emergency medical services for its citizens by renewing a regular property tax levy of \$.50 or less per \$1,000.00 of assessed valuation for a period of six consecutive years to be collected beginning in 2019?

- Yes
- No

Local Measure

**Proposition No. 1
South Beach Regional Fire Authority
Excess Levy for Maintenance and
Operations**

The Governing Board of South Beach Regional Fire Authority adopted Resolution 2018-04 concerning a proposition to adequately finance maintenance and operation costs.

This proposition provides for the support of fire protection and emergency medical services, facilities, maintenance, staffing and operations by authorizing the RFA to levy excess taxes in the amount of \$591,000.00 in 2018 to be collected in 2019 at an approximate levy rate of \$.83 per thousand of assessed valuation (the actual rate will be based on assessed values).

- Approved
- Rejected

For this office only:

In order to vote for precinct committee officer, a partisan office, you must affirm that you are a Democrat or a Republican and may vote only for one candidate from the party you select. Your vote for a candidate affirms your affiliation with the same party as the candidate. This preference is private and will not be matched to your name or shared.

Democratic Party Candidates

**Precinct 901
Precinct Committee Officer -
Democratic**

2-year term - vote for one

- Mark W Davis
I affirm I am a Democrat
- Juliann Charaska
I affirm I am a Democrat

End of Ballot - Thank You For Voting!