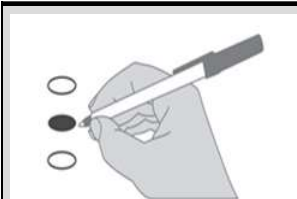


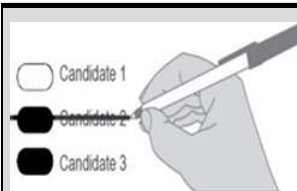
Sample Ballot  
 Special Election  
 Grays Harbor County, Washington  
 February 12, 2019

**Instructions**



Use a pen to completely fill in the oval to the left of your choice.

Vote for one in each race. If you vote for more than one, no votes will be counted for that race.



Draw line through the entire measure response or candidate's name. Then you may make another choice.



**Who donates to campaigns?**

View contributors for candidates and measures

**Public Disclosure Commission**

www.pdc.wa.gov  
 Toll Free (877) 601-2828

**Start Voting Here**

**City Of Aberdeen Measure**

**CITY OF ABERDEEN TRANSPORTATION BENEFIT DISTRICT PROPOSITION NO. 1 SALES AND USE TAX FOR TRANSPORTATION IMPROVEMENTS**

The Board of the Aberdeen Transportation Benefit District adopted Resolution# 2018-17 concerning a sales and use tax to fund transportation improvements. This proposition would authorize a sales and use tax of eighteen one-hundredths (0.018) of one percent to be collected from all taxable retail sales and uses within the District in accordance with RCW 82.14.0455 for a term of ten (10) years to pay costs of transportation improvements identified in the City's Transportation Improvement Plan. Shall this proposition be approved?

- Approved
- Rejected

**Fire Measures**

**Grays Harbor County Fire Protection District No. 3 Proposition to Dissolve Grays Harbor County Fire Protection District No. 3**

The Board of Grays Harbor County Fire Protection District No. 3 adopted Resolution No. 2018-2 concerning a proposition to dissolve the Fire District.

This proposition would dissolve Grays Harbor County Fire Protection District No. 3 effective December 31, 2019. All fire protection and emergency medical services previously provided by the Fire District will continue to be provided by the voter approved South Beach Regional Fire Authority, which has been the exclusive provider of fire protection and emergency medical services within Grays Harbor County Fire Protection District No. 3 since October 1, 2017.

Should this proposition be:

- Approved
- Rejected

**PROPOSITION No. 1**

**Grays Harbor County Fire Protection District No. 4 Emergency Medical Services Property Tax Levy**

Shall a tax levy of \$50,000 (approximately \$0.75 per thousand 2018 assessed valuation) in addition to its regular levy be made by Grays Harbor County Fire Protection District No. 4 for the year 2019 to be collected for the purpose of providing emergency medical care and ambulance service to its citizens in 2020?

- Yes
- No

**Grays Harbor County Fire Protection District No. 11 Proposition to Dissolve Grays Harbor County Fire Protection District No. 11**

**Proposition to Dissolve Grays Harbor County Fire Protection District No. 11**

The Board of Grays Harbor County Fire Protection District No. 11 adopted Resolution No. 2018-005 concerning a proposition to dissolve the Fire District.

This proposition would dissolve Grays Harbor County Fire Protection District No. 11 effective December 31, 2019. All fire protection and emergency medical services previously provided by the Fire District will continue to be provided by the voter approved South Beach Regional Fire Authority, which has been the exclusive provider of fire protection and emergency medical services within Grays Harbor County Fire Protection District No. 11 since October 1, 2017.

Should this proposition be:

- Approved
- Rejected

**Proposition 1 GRAYS HARBOR COUNTY FIRE PROTECTION DISTRICT NO. 15 PERMANENT LEVY FOR EMERGENCY MEDICAL CARE AND AMBULANCE SERVICE**

Grays Harbor County Fire Protection District 15 passed Resolution No. 2018-06 concerning a permanent regular property tax levy in the amount of \$0.50 per \$1,000 assessed valuation, beginning January 1, 2019, for the purpose of providing emergency medical care and ambulance service, pursuant to RCW 84.52.069. Shall Grays Harbor County Fire Protection District No. 15 be authorized to impose a permanent regular property tax levy upon the regular taxable property within the district, of \$0.50 per thousand dollars of assessed valuation?

- Yes
- No

**End of Ballot - Thank You For Voting!**

Sample

**Note: On your return envelope you may not use a power of attorney to sign for someone else.**