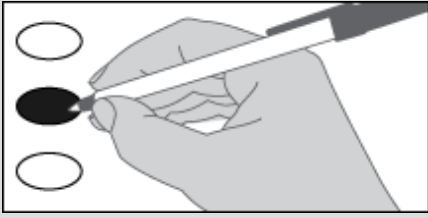


Instructions

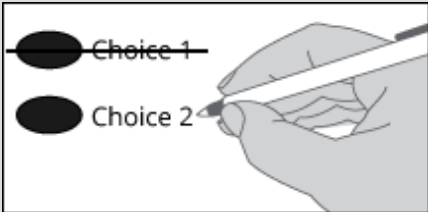
How to vote



Use a black ink pen to completely fill in the oval next to your choice.

Vote for one in each race. If you vote for more than one, no votes will be counted for that race.

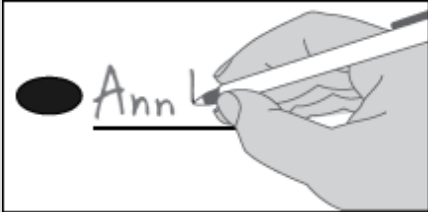
How to correct a mistake



To make a correction, draw a line through the entire choice.

You then have the option of making a different choice by completely filling in another oval.

Optional write-in



To add a new candidate, fill in the oval next to the write-in line and print the name on the write-in line.

Who donates to campaigns?
 View contributors for candidates and measures
Public Disclosure Commission
 www.pdc.wa.gov
 Toll Free (877) 601-2828

READ: If a primary election was held for an office, the two candidates who received the most votes in the Primary advanced to the General Election.

Each candidate for partisan office may state a political party that he or she prefers. A candidate's preference does not imply that the candidate is nominated or endorsed by the party, or that the party approves of or associates with that candidate.

State Measures

Initiatives to the People

Washington State Initiative Measure No. 1631

Initiative Measure No. 1631 concerns pollution. This measure would charge pollution fees on sources of greenhouse gas pollutants and use the revenue to reduce pollution, promote clean energy, and address climate impacts, under oversight of a public board.

Should this measure be enacted into law?

- Yes
- No

Washington State Initiative Measure No. 1634

Initiative Measure No. 1634 concerns taxation of certain items intended for human consumption. This measure would prohibit new or increased local taxes, fees, or assessments on raw or processed foods or beverages (with exceptions), or ingredients thereof, unless effective by January 15, 2018, or generally applicable.

Should this measure be enacted into law?

- Yes
- No

Washington State Initiative Measure No. 1639

Initiative Measure No. 1639 concerns firearms. This measure would require increased background checks, training, age limitations, and waiting periods for sales or delivery of semiautomatic assault rifles; criminalize noncompliant storage upon unauthorized use; allow fees; and enact other provisions.

Should this measure be enacted into law?

- Yes
- No

Initiatives to the Legislature

Washington State Initiative to the Legislature 940

Initiative Measure No. 940 concerns law enforcement. This measure would require law enforcement to receive violence de-escalation, mental-health, and first-aid training, and provide first-aid; and change standards for use of deadly force, adding a "good faith" standard and independent investigation.

Should this measure be enacted into law?

- Yes
- No

Advisory Votes

Washington State Advisory Vote No. 19

Engrossed Second Substitute Senate Bill 6269

The legislature expanded, without a vote of the people, the oil spill response and administration taxes to crude oil or petroleum products received by pipeline, costing \$13,000,000 over ten years for government spending.

This tax increase should be:

- Repealed
- Maintained

READ: Each candidate for partisan office may state a political party that he or she prefers. A candidate's preference does not imply that the candidate is nominated or endorsed by the party, or that the party approves of or associates with that candidate.

Federal - Partisan Offices

United States U.S. Senator

6-year term - vote for one

- Maria Cantwell
(Prefers Democratic Party)
- Susan Hutchison
(Prefers Republican Party)
- _____

Congressional District 3 U.S. Representative

2-year term - vote for one

- Jaime Herrera Beutler
(Prefers Republican Party)
- Carolyn Long
(Prefers Democratic Party)
- _____

State of Washington Partisan Offices

Legislative District 14 State Representative Pos. 1

2-year term - vote for one

- Chris Corry
(Prefers Republican Party)
- Sasha Bentley
(Prefers Democratic Party)
- _____

Legislative District 14 State Representative Pos. 2

2-year term - vote for one

- Gina Mosbrucker
(Prefers Republican Party)
- Liz Hallock
(Prefers Democratic Party)
- _____

Vote Both sides

County Partisan Offices

COUNTYWIDE DISTRICT Assessor

4-year term - vote for one

Gabriel P. Spencer
(Prefers Democrat Party)

Tom Dillon
(States No Party Preference)

COUNTYWIDE DISTRICT Auditor

4-year term - vote for one

Robert J. Waymire
(Prefers Republican Party)

COUNTYWIDE DISTRICT Clerk

4-year term - vote for one

Grace D. Cross
(Prefers Democratic Party)

COUNTYWIDE DISTRICT Commissioner #3

4-year term - vote for one

Bob Hamlin
(Prefers Democratic Party)

COUNTYWIDE DISTRICT Prosecuting Attorney

4-year term - vote for one

Adam N. Kick
(Prefers Democratic Party)

Dan McGill
(Prefers Republican Party)

COUNTYWIDE DISTRICT Sheriff

4-year term - vote for one

Dave Brown
(Prefers Republican Party)

COUNTYWIDE DISTRICT Treasurer

4-year term - vote for one

Vickie Clelland
(Prefers Republican Party)

Judicial Nonpartisan Offices

Supreme Court Justice Position 2

6-year term - vote for one

Susan Owens

Supreme Court Justice Position 8

6-year term - vote for one

Nathan Choi

Steve Gonzalez

Supreme Court Justice Position 9

6-year term - vote for one

Sheryl Gordon McCloud

Court of Appeals, Division 2, District 3 Judge Position 1

6-year term - vote for one

Rich Melnick

COUNTYWIDE DISTRICT District Court Judge

4-year term - vote for one

Ron Reynier

County Nonpartisan Office

PUBLIC UTILITY DISTRICT Commissioner #1

6-year short and full term - vote for one

Dan Boyes

Marie Gluesenkamp Perez

Local Measures

HOME VALLEY WATER DISTRICT NO. 1 Proposition No. 1

MAINTENANCE AND CAPITAL IMPROVEMENT FUND LEVY

The Board of Commissioners of the Home Valley Water District No. 1 adopted resolution 2018-1, concerning a proposition to finance maintenance and capital improvement expenses. This proposition would authorize the District to levy the following excess taxes, in place of an expiring levy, upon all property within the District, for support of the District's general fund maintenance and capital improvement expenses:

<u>Levy / Collection Years</u>	<u>Approximate Levy rate / \$1000 Assessed Value</u>	<u>Levy Amount</u>
2018/2019	\$.51	\$12,500

Should this proposition be approved?

LEVY.....YES

LEVY.....NO

SKAMANIA COUNTY PARK AND RECREATION DISTRICT NO. 1

Proposition No. 1

REGULAR PROPERTY TAX LEVY

Will the Skamania County Parks & Recreation District #1, also known as Underwood Park & Recreation District (UPRD) be authorized to impose regular property tax levies of \$0.20 or less per thousand dollars of assessed valuation for each of the next six consecutive years?

YES

NO

Vote Both sides