

Sample Ballot

General Election  
November 6, 2018  
Stevens County

Precinct Countywide  
Page 1 of 2

**Who donates to campaigns?**  
View contributors for candidates and measures.  
Public Disclosure Commission  
www.pdc.wa.gov  
Toll Free (877) 601-2828

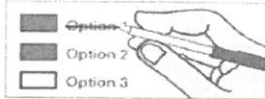
**Instructions**

**How to vote**



Use a dark blue or black ink pen to completely fill in the box to the left of your choice.  
Vote for one in each race.  
If you vote for more than one, no votes will be counted for that race.

**If you make a mistake**



Draw a line through the entire measure response or candidate's name.  
Then you may make another choice.

**Optional write-in**



To vote for a candidate not listed for that race, fill in the box to the left of the dashed line and print the name of the candidate.

**STATE MEASURES**

**Initiatives to the People**

**Initiative Measure No. 1631**

Initiative Measure No. 1631 concerns pollution. This measure would charge pollution fees on sources of greenhouse gas pollutants and use the revenue to reduce pollution, promote clean energy, and address climate impacts, under oversight of a public board.

Should this measure be enacted into law?

Yes  
 No

**Initiative Measure No. 1634**

Initiative Measure No. 1634 concerns taxation of certain items intended for human consumption. This measure would prohibit new or increased local taxes, fees, or assessments on raw or processed foods or beverages (with exceptions), or ingredients thereof, unless effective by January 15, 2018, or generally applicable.

Should this measure be enacted into law?

Yes  
 No

**Initiative Measure No. 1639**

Initiative Measure No. 1639 concerns firearms. This measure would require increased background checks, training, age limitations, and waiting periods for sales or delivery of semiautomatic assault rifles; criminalize noncompliant storage upon unauthorized use; allow fees; and enact other provisions.

Should this measure be enacted into law?

Yes  
 No

**Initiatives to the Legislature**

**Initiative Measure No. 940**

Initiative Measure No. 940 concerns law enforcement. This measure would require law enforcement to receive violence de-escalation, mental-health, and first-aid training, and provide first-aid; and change standards for use of deadly force, adding a "good faith" standard and independent investigation.

Should this measure be enacted into law?

Yes  
 No

**Advisory Votes**

**Advisory Vote No. 19  
Engrossed Second Substitute Senate Bill 6269**

The legislature expanded, without a vote of the people, the oil spill response and administration taxes to crude oil or petroleum products received by pipeline, costing \$13,000,000 over ten years for government spending.

This tax increase should be:

Repealed  
 Maintained

"If a primary election was held for an office, the two candidates who received the most votes in the primary advanced to the general election.

Each candidate for partisan office may state a political party that he or she prefers. A candidate's preference does not imply that the candidate is nominated or endorsed by the party, or that the party approves of or associates with that candidate."

"READ: Each candidate for partisan office may state a political party that he or she prefers. A candidate's preference does not imply that the candidate is nominated or endorsed by the party, or that the party approves of or associates with that candidate."

**FEDERAL - PARTISAN OFFICES**

**U.S. Senator**

Maria Cantwell  
(Prefers Democratic Party)  
 Susan Hutchison  
(Prefers Republican Party)  
 \_\_\_\_\_  
-----

**Congressional District 5  
U.S. Representative**

Cathy McMorris Rodgers  
(Prefers Republican Party)  
 Lisa Brown  
(Prefers Democratic Party)  
 \_\_\_\_\_  
-----

56615

Sample Ballot

General Election  
November 6, 2018  
Stevens County

Precinct Countywide  
Page 2 of 2

STATE - PARTISAN OFFICES

**Legislative District 7  
State Senator**

Shelly Short  
(Prefers Republican Party)

Karen Hardy  
(Prefers Democratic Party)

**Legislative District 7  
State Representative Pos. 1**

Jacquelin Maycumber  
(Prefers Republican Party)

Randall (Randy) Michaelis  
(Prefers Democratic Party)

**Legislative District 7  
State Representative Pos. 2**

Joel Kretz  
(Prefers Republican Party)

Mike Bell  
(Prefers Democratic Party)

COUNTY - PARTISAN OFFICES

**Assessor**

John Olson  
(Prefers Republican Party)

Rick Johnson  
(Prefers Republican Party)

**Auditor**

Lori Larsen  
(Prefers Republican Party)

Tim Gray  
(Prefers Democratic Party)

**Clerk**

Julie C. James  
(Prefers Republican Party)

**County Commissioner #2**

Don Dashiell  
(Prefers Republican Party)

Jeffery Charvet  
(Prefers Independent Party)

**Coroner**

Lorrie Sampson  
(Prefers Republican Party)

Brent Hellie  
(Prefers Republican Party)

**Sheriff**

Brad Manke  
(Prefers Republican Party)

Mike Berry  
(Prefers Republican Party)

**Treasurer**

Trina R. Cox  
(Prefers Republican Party)

Leslie Valz  
(Prefers Republican Party)

**Prosecuting Attorney**

Tim Rasmussen  
(Prefers Republican Party)

NON PARTISAN OFFICES

**Public Utility District 1  
Commissioner District 3**

Dwight Morgan

**Supreme Court Justice Position 2**

Susan Owens

**Supreme Court Justice Position 8**

Nathan Choi

Steve Gonzalez

**Supreme Court Justice Position 9**

Sheryl Gordon McCloud

**Court of Appeals, Division 3  
District 1 Judge Position 1**

Laurel Siddoway

**District Court Judge**

Gina A. Tveit

Lech Radzimski

**Stevens County Fire Protection District No. 1  
REPLACEMENT EMERGENCY MEDICAL CARE AND SERVICE LEVY**

The Board of Commissioners of Stevens County Fire Protection District No. 1 adopted Resolution No. 2018-18 concerning a proposition to finance emergency medical services. The proposition would impose a regular emergency medical services property tax levy of an amount not to exceed \$.35 per \$1,000.00 of assessed valuation for each of six consecutive years, beginning in and for collection in 2019, for the purpose of providing emergency medical services, all as provided in Resolution No. 2018-18. Should this Proposition be approved?

Levy Yes

Levy No

**Orient School District No. 65  
Replacement Educational Programs and Operation Levy**

The Board of Directors of Orient School District No. 65 adopted Resolution No. 2-18-19, concerning a proposition to finance educational programs and operation expenses. This proposition would authorize the District to meet the educational needs of its students by levying the following excess taxes, in place of an expiring levy, on all taxable property within the District, for essential educational programs and operation expenses not funded by the State of Washington:

Collection Year	Estimated Levy Rate/\$1,000 Assessed Value	Levy Amount
2019	\$0.52	\$60,000
2020	\$0.52	\$60,000
2021	\$0.52	\$60,000

all as provided in Resolution No. 2-18/19. Should this proposition be approved?

Levy Yes

Levy No

56615

Read Both Sides of the Ballot